

TECHNICAL GUIDE

U305 SINGLE LAYER 48" OC ASSEMBLY CHECKLIST

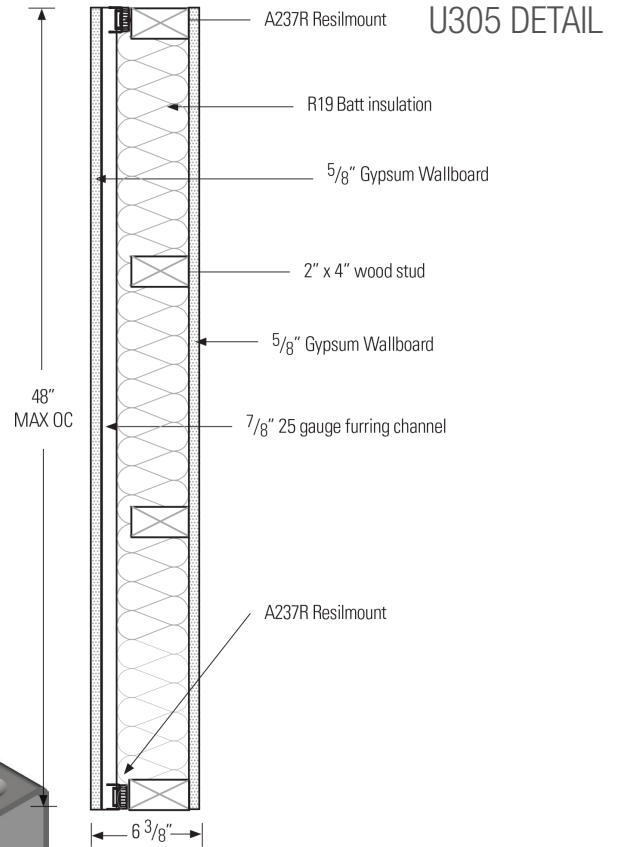
At Studco we are dedicated to making things easy for our customers and assist in their design and specification process. The following document details what is required to complete your U305 fire and acoustic rated assemblies with Resilmount Sound Isolation Solutions.

For your convenience, we have created a checklist for everything you need to accurately achieve a U305 Single Layer 48" OC spaced assembly.

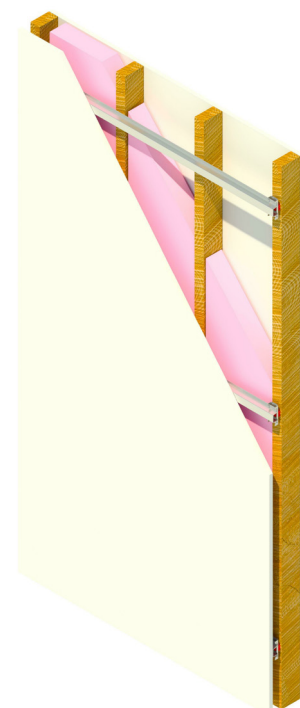
UL305 CHECKLIST

The following components will be required to achieve a U305 Assembly:

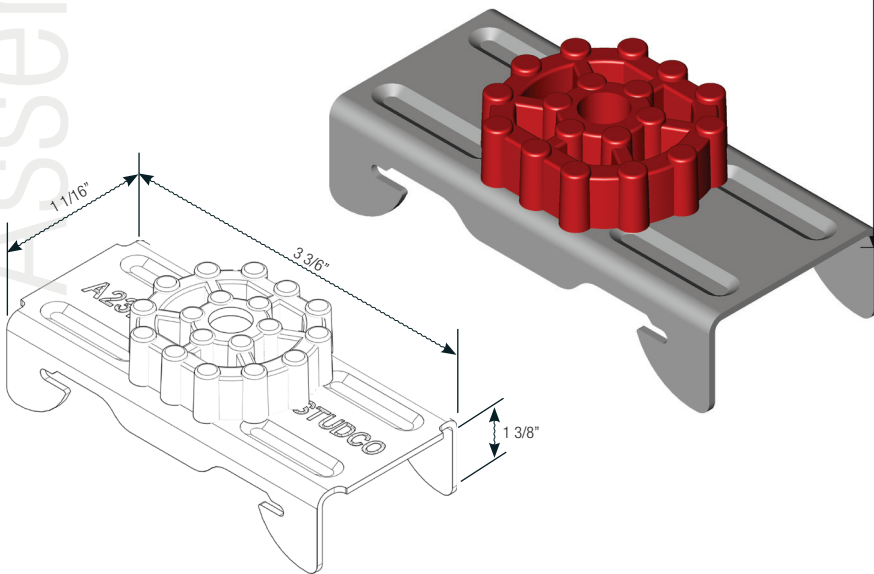
- 1 layer either side of 5/8" Gypsum Wallboard
- 2" x 4" wood stud with max spacing of 16" OC or Studco 7/8" or 1-1/2" Furring Channel
- R19 3 1/2" Batt Insulation
- A237R spaced 48" x 24" OC
- 6-3/8" total wall thickness



U305 ELEVATION



A237R RESILMOUNT SOUND ISOLATION CLIP



RAL-TL08-237

TESTING AND SPECIFICATION INFORMATION

The installation of Resilmounts suit standard furring channels and isolate the system from the structure or adjoining parties.

For more testing information and the three part specification document please contact your Studco Account Manager on 800.675.8023